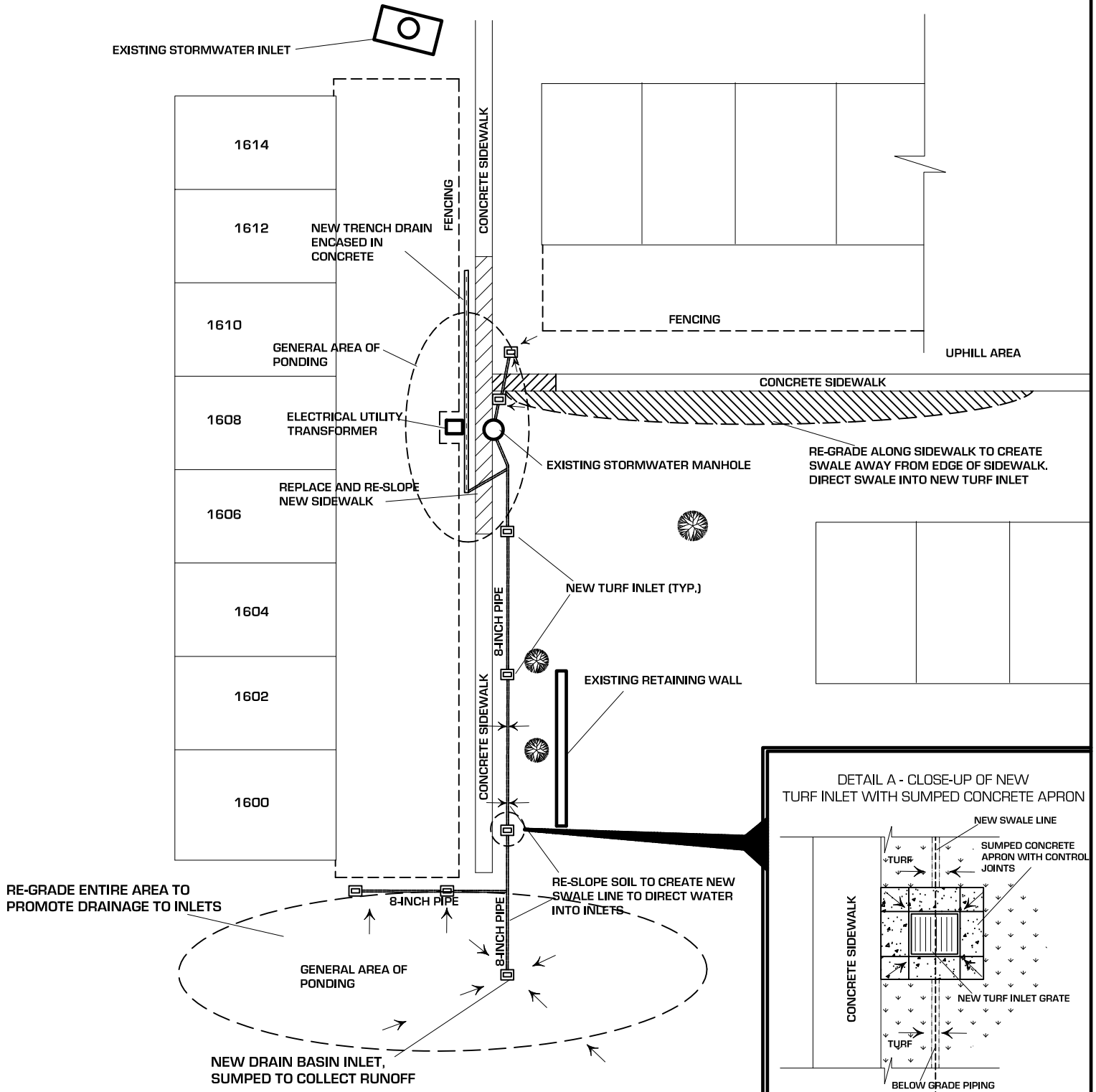


DUNTERRY PLACE

NOTE:

1. ALL TURF INLETS ADJACENT TO CONCRETE SIDEWALKS (5 TOTAL) SHALL CONTAIN A 12-INCH APRON OF CONCRETE AROUND THE INLET. THE REMAINDER OF INLETS (3) DO NOT REQUIRE A CONCRETE APRON.
2. ALL INLETS AND PIPING SHALL TIE INTO THE EXISTING STORMWATER MANHOLE.
3. ALL PIPING SHOWN SHALL BE 8-INCH DIAMETER, SOLID, N-12 IB ST (SOIL TIGHT) SMOOTH WALL INTERIOR PIPE AS MANUFACTURED BY ADS.
4. REMOVE BRICK STEP BEHIND UNIT 1608 TO ACCOMMODATE NEW TRENCHDRAIN.



Written dimensions, where provided, govern over scaled dimensions. The information on this plan shall be verified by the Contractor prior to the start of any new construction or the fabrication of any new materials. The Contractor shall notify the Owner and Gardner James Engineering, Inc. upon discovery of any discrepancies.

TITLE:
REVISED SITE PLAN - DRAINAGE MODIFICATIONS BEHIND UNITS
1600-1614 DUNTERRY PLACE

PROJECT:
1600-1614 DUNTERRY PLACE
STONELEIGH COMMUNITY
MCLEAN, VIRGINIA

Date:
1/19/2009

Scale:
Not To Scale

Drawn By:
D. GERTZ

File Number:
2028

Reviewed By:
D. GARDNER

File Name:
File Name

GARDNER JAMES
ENGINEERING, INC.

8335 GUILFORD ROAD, SUITE 1, COLUMBIA, MD 21046
PHONE: (410) 480-1500 FAX: (410) 480-1501

Sheet
3
of
3